

**SECTION 2****CHIEF STEWARD:****POULTRY AND WATERFOWL****MR LES BROWN****Regulations and Condition of Entry:**

1. Entries are accepted subject to the Rules of The Queensland Chamber of Agricultural Societies and the Regulations of The Sarina Show Society Inc.
2. Classes will be formed for all Breeds mentioned only where there are three or more of a breed, otherwise exhibits will be placed in AOV/AOC Classes.  
In AOV/AOC Classes where there are three or more exhibits of any one Breed, separate Classes will be provided for that Breed.
3. Breed Champions: Where there are fourteen (14) or more exhibits of a Breed, male and females will be judged separately for individual awards.
4. Only birds entered in single Classes are eligible for single Championships.
5. Only Judges, Stewards and Adult Exhibitors will be permitted in the Pavilion during Judging.
6. No person shall interfere with or handle any exhibit without the authority of the Chief Steward.
7. No sick or diseased bird will be penned.
8. Exhibits must be the property of the Exhibitor.
9. Birds can be penned between 7.00pm and 9.00pm on Friday 6<sup>th</sup> August 2010 and 7.00am and 8:30am on Saturday, 7<sup>th</sup> August 2010
10. 20 entries or more receive a free pass. Entries must be in and paid for to receive this pass.

**Judging will commence at 9.00am on Saturday 7<sup>th</sup> August 2010****ENTRIES CLOSE: Friday 31<sup>st</sup> JULY 2010**

To the Secretary, Sarina Show Society Inc. PO Box 119, Sarina. Q 4737

**Entry Fee: \$1.00 per Entry per Class****(Please state on entry form: Cock, Cockerel: Hen, Pullet****Prize Money: First \$4.00 Second \$2.00 Third \$1.00****Breed Champions \$2.00**

Second paid only if 4 or more entries. Third paid only if 5 or more entries.

The Poultry Pavilion will be open to the Public from 3.00pm to 5.00pm on

Saturday and from 8.00am to 4.00pm on Sunday.

Birds can be re-claimed after 4.00pm on Sunday.

**CHAMPIONSHIPS****GRAND CHAMPION:** Sash and Trophy sponsored by LR & LA Brown  
**\$20** donated by **SARINA PETS AND PRODUCE****RESERVE CHAMPION:** Sash and Trophy donated by **S & P BAILLIE**  
**\$15** donated by **S & P BAILLIE****CHAMPION WATERFOWL:** Sash and **\$20** donated by  
**SARINA PETS AND PRODUCE****RESERVE CHAMPION WATERFOWL:** Sash and **\$10.00** donated by  
**SARINA PETS AND PRODUCE****CHAMPION JUVENILE:** Sash and **\$15** donated by **Marion Keir****RESERVE CHAMPION JUVENILE:** Sash and **\$10** donated by **Marion Keir**

PART OF PRIZE MONEY DONATED BY SARINA POULTRY SOCIETY

**SECTION 2**

Steward

**POULTRY & WATERFOWL**

Mr Les Brown

Champion Large Softfeather	Sash and \$5
Reserve Champion Large Softfeather	Sash and \$3
Champion Heavy Softfeather	Card and \$2
Reserve Champion Heavy Softfeather	Card and \$1
Champion Light Softfeather	Card and \$2
Reserve Champion Light Softfeather	Card and \$1
Champion Large Hardfeather	Sash and \$5
Reserve Champion Large Hardfeather	Sash and \$3
Champion Australian Game	Card and \$2
Reserve Champion Australian Game	Card and \$1
Champion Indian Game	Card and \$2
Reserve Champion Indian Game	Card and \$1
Champion Old English Game	Card and \$2
Reserve Champion Old English Game	Card and \$1
Champion Pit Game	Card and \$2
Reserve Champion Pit Game	Card and \$1
AOV Large Fowl HardFeather – <b>Donated by A &amp; K Perry</b>	<b>Sash and \$10</b>
Champion Large Fowl of Show – <b>Donated by Rogers Rural Services</b>	<b>Sash and \$25</b>
Reserve Champion Large Fowl of Show	Sash and \$3
Champion Softfeather Bantam	Sash and \$5
Reserve Champion Softfeather Bantam	Sash and \$3
Champion Heavy Breed Softfeather Bantam	Card and \$2
Reserve Champion Heavy Breed Softfeather Bantam	Card and \$1
Champion Light Breed Softfeather Bantam	Card and \$2
Reserve Champion Light Breed Softfeather Bantam	Card and \$1
Champion Hardfeather Bantam	Sash and \$5
Reserve Champion Hardfeather Bantam	Sash and \$3
Champion Old English Game Bantam	Card and \$2
Reserve Champion Old English Game Bantam	Card and \$1

**SECTION 2**

Steward

**POULTRY & WATERFOWL**

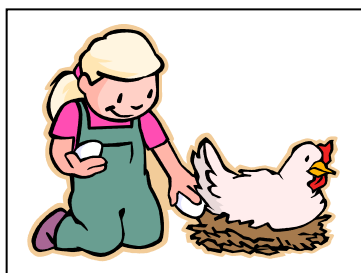
Mr Les Brown

Champion Pit Bantam	Card and \$2
Reserve Champion Pit Bantam	Card and \$1
Champion Modern Bantam	Card and \$2
Reserve Champion Modern Bantam	Card and \$1
Champion AOV Hardfeather Game Bantam	
<b>Donated By A &amp; K Perry</b>	<b>Sash and \$10</b>
Reserve Champion AOV Hardfeather Bantam	Card and \$2
Champion Bantam of Show	
<b>Donated by Rogers Rural Services</b>	<b>Sash and \$25</b>
Reserve Champion Bantam of Show	Sash and \$3
Champion Bantam Breeding Pair	Sash and \$5
Champion Large Fowl Breeding Pair	Sash and \$5
Champion Waterfowl Breeding Pair	Sash and \$5
Champion Pair of Show	Sash and \$5
Champion Heavy Breed Waterfowl	Card and \$2
Reserve Champion Heavy Breed Waterfowl	Card and \$1
Champion Light Breed Waterfowl	Card and \$2
Reserve Champion Light Breed Waterfowl	Card and \$1
Champion Bantam Waterfowl	Card and \$2
Reserve Champion Bantam Waterfowl	Card and \$1
Champion Guinea Fowl	Card and \$5
Champion Goose	Card and \$5

**LARGE SOFTFEATHER**

**HEAVY BREED SOFTFEATHER**

	Cock	Hen	Cockerel	Pullet
Australorp	1	2	3	4
Barred Plymouth Rock	5	6	7	8
Australian Langshan	9	10	11	12
Wyandotte (State Colour)	13	14	15	16
Rhode Island Red	17	18	19	20
Light Sussex	21	22	23	24
Orpington (State Colour)	25	26	27	28
Heavy Standard	29	30	31	32



**LARGE HARDFEATHER**

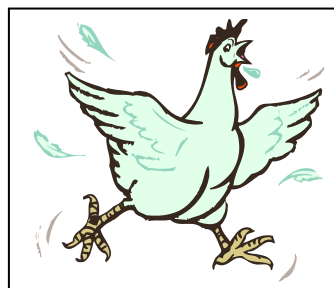
	Cock	Hen	Cockerel	Pullet
Australian Game (State Colour)	69	70	71	72
Indian Game	73	74	75	76
Jubilee Game	77	78	79	80

**OEG**

Black Red (W Wheaten)	81		82	
Black Tail Wheaten		83		84
Black Red Partridge L/L	85	86	87	88
Black Red Partridge W/L	89	90	91	92
Black Red Wheaten	93		94	
Blue Tail Wheaten		95		96
Blue Red Partridge	97	98	99	100
Brown Red	101	102	103	104
Black	105	106	107	108
Ginger	109	110	111	112
Pile	113	114	115	116
Spangle	117	118	119	120
Silver Duckwing	121	122	123	124
Golden Duckwing	125	126	127	128
A. O. C.	129	130	131	132

**LIGHT BREED SOFTFEATHER**

Campine (State Colour)	33	34	35	36
Ancona	37	38	39	40
White Leghorn	41	42	43	44
Brown Leghorn	45	46	47	48
Black Leghorn	49	50	51	52
Silver Spangled Hamburg	53	54	55	56
Black Hamburg	57	58	59	60
Chinese Silkie (State Colo)	61	62	63	64
A. O. V. Light Standard	65	66	67	68



**PIT GAME CLASSES**

Plain Face Heavy	133	134	135	136
Muff Face Heavy	137	138	139	140
Plain Face Light	141	142	143	144
Muff Face Light	145	146	147	148

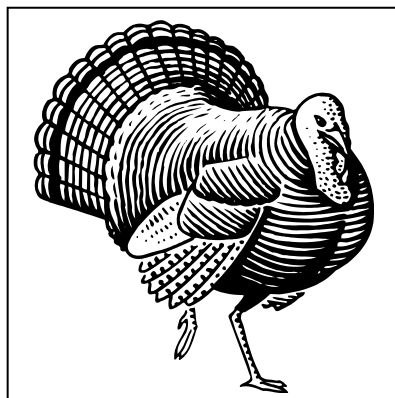
**A.O.V. LARGE HARDFEATHER**

(State Breed & Colour)	149	150	151	152
------------------------	-----	-----	-----	-----

**BREEDING PAIRS**

Large Softfeather	325
Large Hardfeather	326
Softfeather Bantam	327
Hardfeather Bantam	328

<b><u>TURKEY</u></b> (State Breed & Colour)	329	330
---	-----	-----

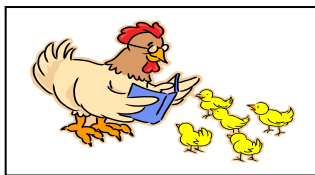


## SECTION 2

## POULTRY AND WATERFOWL

### SOFTFEATHER BANTAM

Ancona	153	154	155	156
Rhode Island Red	157	158	159	160
Australorp	161	162	163	164
White Leghorn	165	166	167	168
Blue Leghorn	169	170	171	172
Black Leghorn	173	174	175	176
Brown Leghorn	177	178	179	180
Black Pekin	181	182	183	184
White Pekin	185	186	187	188
Blue Pekin	189	190	191	192
Buff Pekin	193	194	195	196
Cuckoo Pekin	197	198	199	200
Black Rosecomb	201	202	203	204
Wyandotte (State Colour)	205	206	207	208
Aust Langshan (Colour)	209	210	211	212
Light Sussex	213	214	215	216
Japanese Birchen	217	218	219	220
A.O.V. Softfeather	221	222	223	224



### HARDFEATHER BANTAM

#### O.E.G.

Black Red Wheaten/L/L	225		226	
Black Tail Wheaten		227		228
Black Red Partridge L/L	229	230	231	232
Black Red Partridge W/L	233	234	235	236
Blue Red Wheaten	237	238	239	240
Blue Tail Wheaten	241	242	243	244
Blue Red Partridge	245	246	247	248
Ginger	249	250	251	252
Pile	253	254	255	256
Spangle	257	258	259	260
Silver Duckwing	261	262	263	264
Golden Duckwing	265	266	267	268
A. O. C.	269	270	271	272

#### MODERN

Black Red	273	274	275	276
Pile	277	278	279	280
Brown Red	281	282	283	284
Wheaten	285	286	287	288
Duckwing	289	290	291	292
Birchen	293	294	295	296
A.O.C.	297	298	299	300
Indian Game	301	302	303	304
Jubilee Game	305	306	307	308
Australian Game	309	310	311	312
Pit Game – Plain Face	313	314	315	316
Pit Game – Muff Face	317	318	319	320

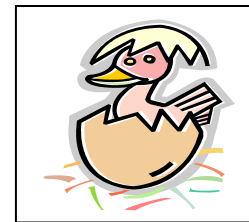
**JUVENILE CLASS**      **321**      **322**      **323**      **324**  
**(under 14 years)**

### WATERFOWL

#### HEAVY BREEDS

##### Muscovy

	DRAKE	DUCK	U12 DRAKE	U12 DUCK
White	1	2	3	4
Black & White	5	6	7	8
Blue & White	9	10	11	12
Bronze & White	13	14	15	16
A.O.C.	17	18	19	20
Aylesbury	21	22	23	24
Peking	25	26	27	28
Rouen	29	30	31	32
Cayuga	33	34	35	36
A.O.V. Heavy	37	38	39	40



#### LIGHT BREEDS

##### Campbell

Khaki	41	42	43	44
White	45	46	47	48
Dark	49	50	51	52

##### Indian Runner

White	53	54	55	56
A.O.C.	57	58	59	60

##### Welsh Harlequin

	61	62	63	64
--	----	----	----	----

##### A.O.V. Light Breed

	65	66	67	68
--	----	----	----	----

#### BANTAM BREEDS

##### Mallard

Natural	69	70	71	72
Fawn	73	74	75	76
Blue	77	78	79	80
White	81	82	83	84

##### A.O.V. BANTAM BREED

	85	86	87	88
--	----	----	----	----

#### WATERFOWL BREEDING PAIR

89 (State Breed)

##### Geese

Chinese	1	2	3	4
Embsden	5	6	7	8
Toulouse	9	10	11	12
Sebastopol	13	14	15	16
English White	17	18	19	20
English Grey	21	22	23	24
A.O.V.	25	26	27	28